

“Formwork construction”

The important points for Safety and health

Handling of electric devices

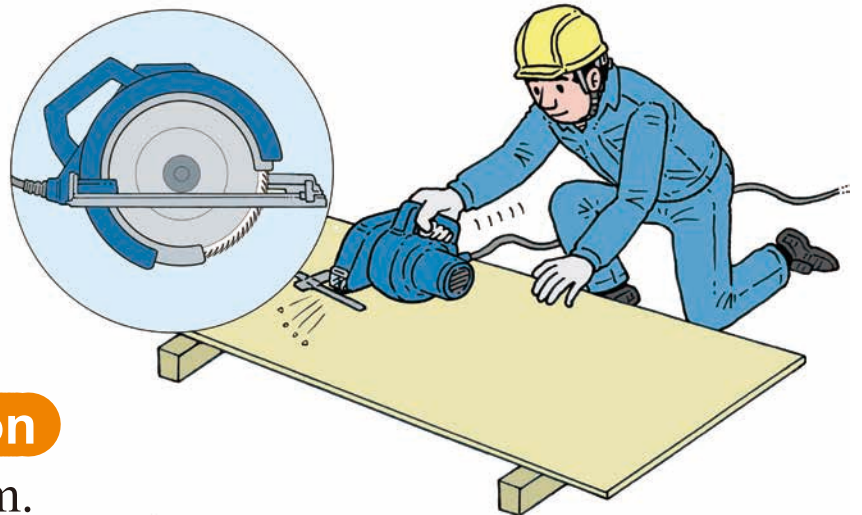
(1) Handling of portable electric circular saws

Let's attend the training for workers handling of portable electric circular saws.

* Work requiring a qualification (special training or training for hand-held circular saws)

Carry out the start-up inspection before the work.

1. Check for damaged blade and bolts and screws
2. Cutting or damage in a cable
3. State of the cover return
4. Condition of the brake



Matters to pay attention

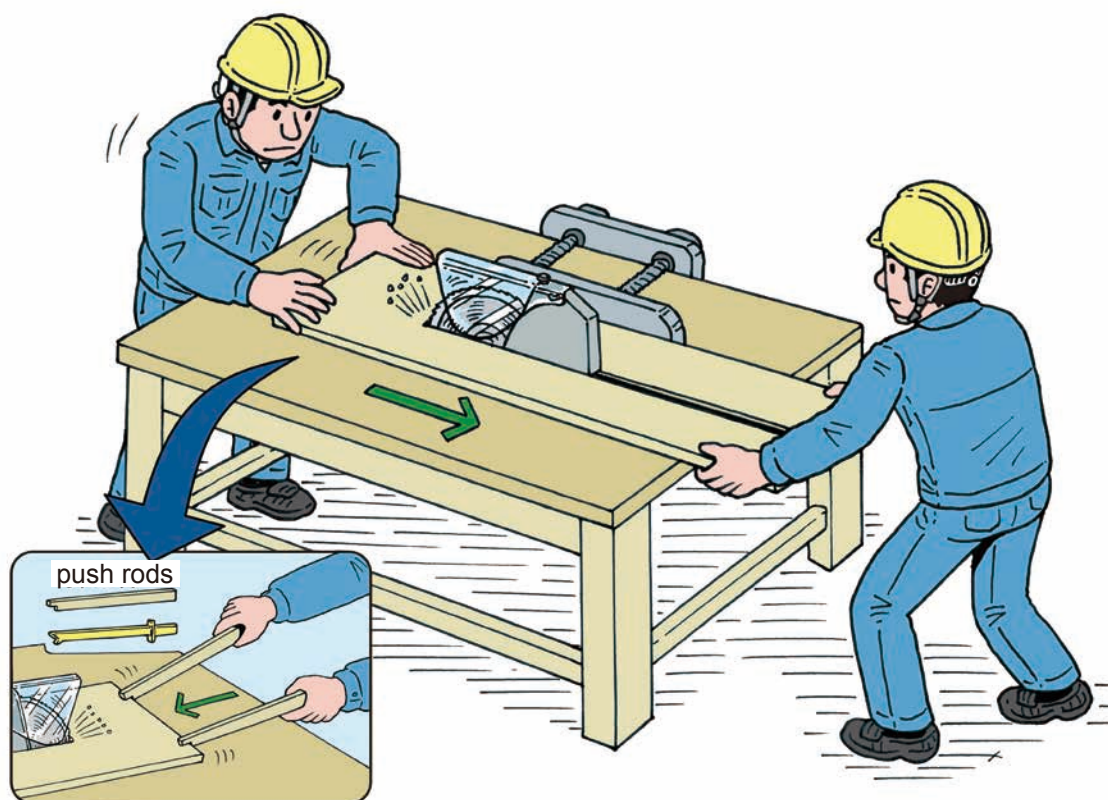
1. Work on a stable platform.
2. Do not wear cotton work gloves that could get caught.
3. If abnormal noise occurs, stop working.
4. Check the cable position before start cutting.
5. Turn off the power when moving the portable electric circular saw.
6. Replace immediately when the blade becomes not sharp.

(2) Handling of circular saw machines

Let's attend the training for workers handling of circular saw machines.

Carry out the start-up inspection before the work.

1. Check the cable position before starting cutting.
2. Cutting or damage in a cable
3. State of a cover return
4. Condition of a brake



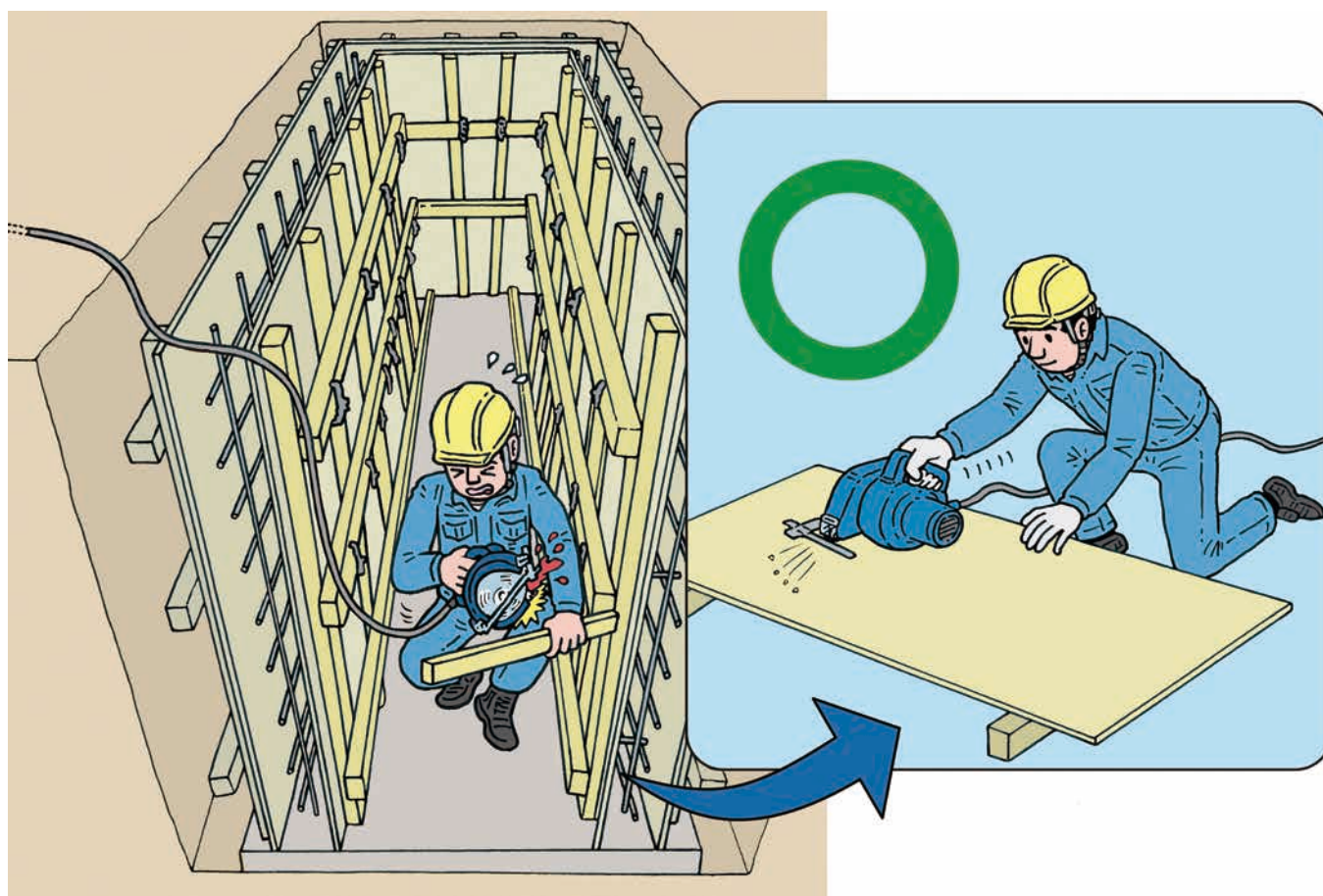
Matters to pay attention

1. Keep your hands away from the safety cover.
2. Let's work on long objects by two people.
3. Replace immediately when the blade becomes not sharp.
4. Use push rods when cutting slender objects.

(3) Industrial accident cases on circular saws

Example

A worker accidentally cut one's femur when he/she reworked the formwork with a portable electric circular saw in the narrow place.



Matters to pay attention

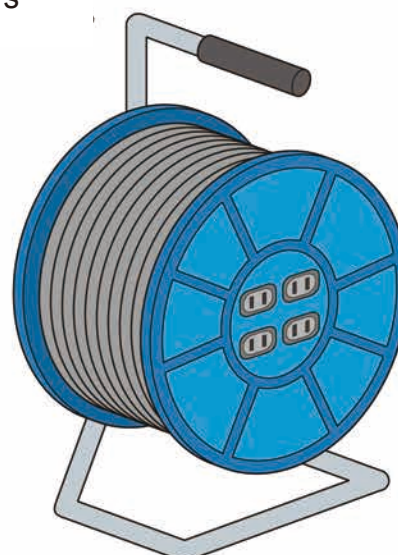
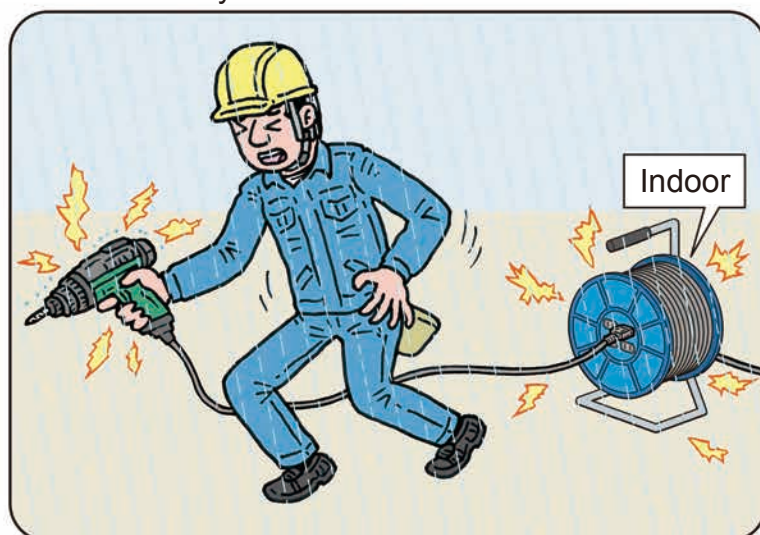
1. Use a hand saw for the rework of formwork in narrow spaces.
2. When using a portable electric circular saw, make sure to inspect and maintain the safety cover.
3. Cut with an electric circular saw on a stable work bench.

(4) Electric drum

Since it is classified into the indoor use and the outdoor use, select the one suitable for the work place.

There is a risk of electric leakage if the indoor use saw is applied to outdoors in the rain.

There is a danger of electric leakage when using indoors outdoors in rainy weather



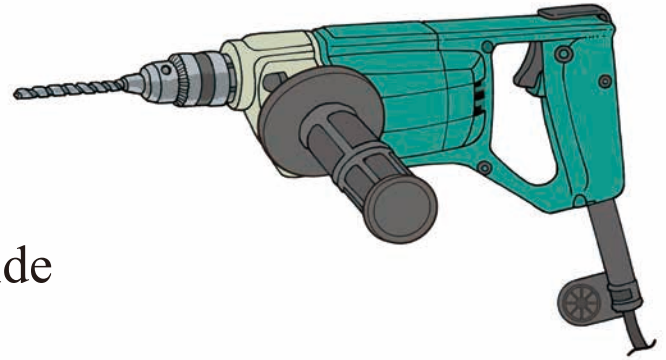
Matters to pay attention

1. Pull out a whole cord and use them with no cord left in the drum.
 - ◆ If the drum is used with the cord remaining, there is a risk of overheating due to heat dissipation and overheating.
2. Check the rated current and do not exceed it.
 - ◆ If the rated current exceeds, there is a risk of overheating and a fire.

(5) Electric drill

Carry out the start-up inspection before the work.

1. Check damage in the drill.
2. Check switch abnormality.
3. Use in front of the body,
and check your working posture.
4. Check the state of the opposite side
of the hole.
5. Check that the cable is three wired and is not damaged.
6. Check the cable position.



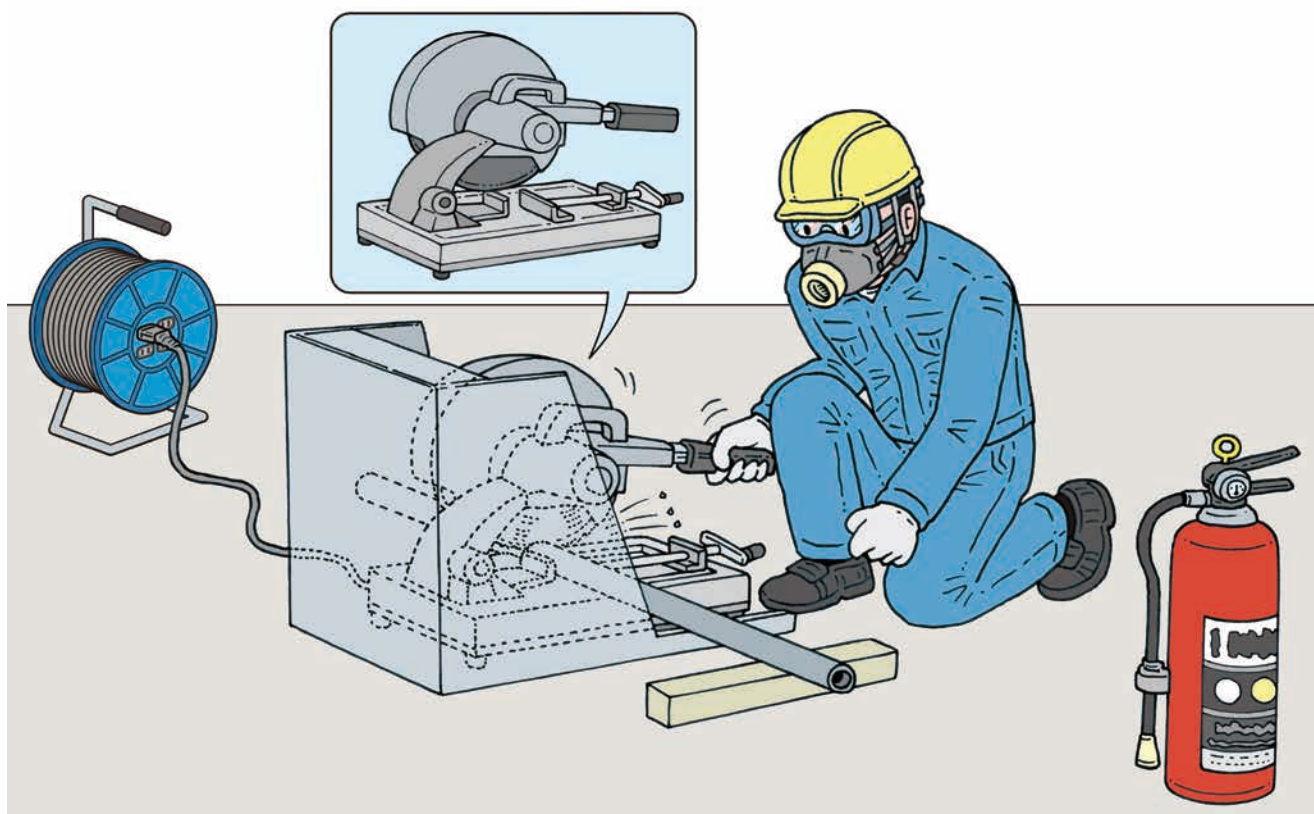
Matters to pay attention

1. Use the protective glasses.
2. Let's stop using when there is abnormal sound or abnormal
vibration in use.
3. Let's keep a good posture.
4. Unplug after use.

(6) High-speed cutter

Take Special Education for Grinding Wheels.

* Qualification work (Special education for grinding wheels)



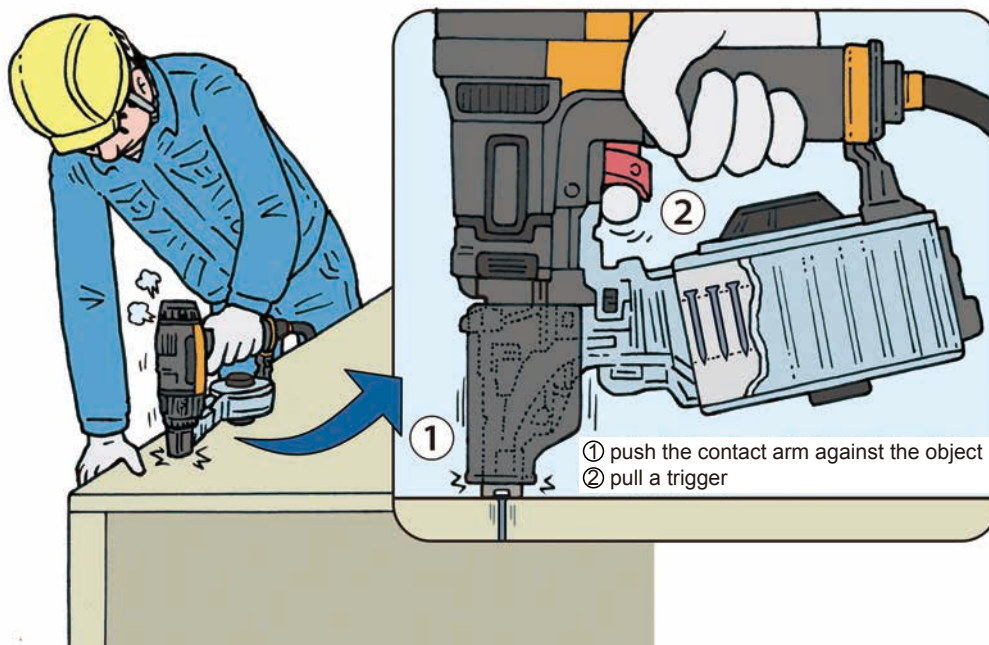
Matters to pay attention

1. Do not grind on the side of the grinding wheel.
2. Secure a cutting material and wear the protective gloves.
3. Be sure to have a fire extinguisher.
4. Use a spark protection cover.
5. Only the person who has completed the grinding wheel special education can use it.
6. Make a trial run before starting the work or after changing a grinding wheel.

(7) Nail driving machine

Carry out the start-up inspection before starting the work.

1. Checking of damaged parts and loose bolts
2. Confirm that there are no conduit tubes or buried objects at a work area.
3. Confirmation of clearing out people from the work area.
4. Check if wearing of protective glasses.



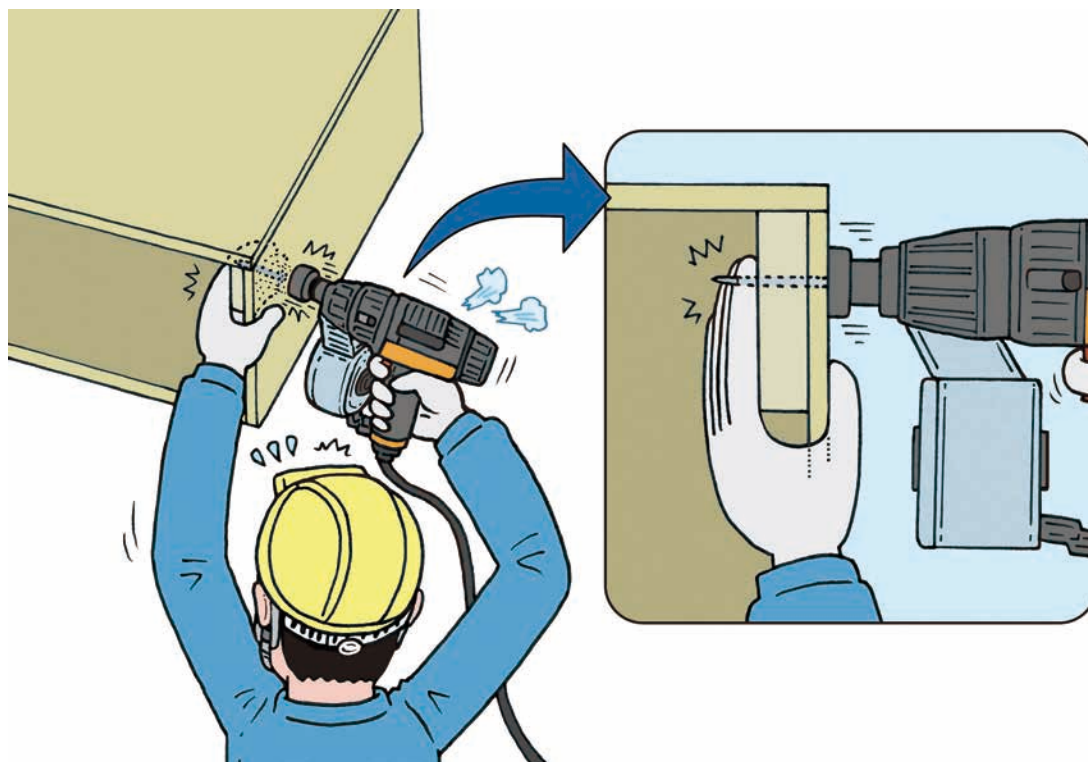
Matters to pay attention

1. Do not point the outlet at people.
2. Do not move a tacker or a nail driving machine with one's finger on the trigger.
3. Do not work facing each other.
4. Remove the air hose when the work is interrupted.
5. If you feel something abnormal, stop using it.

(8) Accident cases by nail driving machine

Example

During the formwork construction of the foundation for a facility, due to the floating of plywood, the worker pressed the plywood and the batten cleat with his/her left hand and hit his/her hand by a nail and got injured.



Matters to pay attention

1. Do not put your hand in the direction of the nail.
2. Check the length of the nail and the thickness of the wood.